

<https://web.math.princeton.edu/conference/Klainerman2016/>

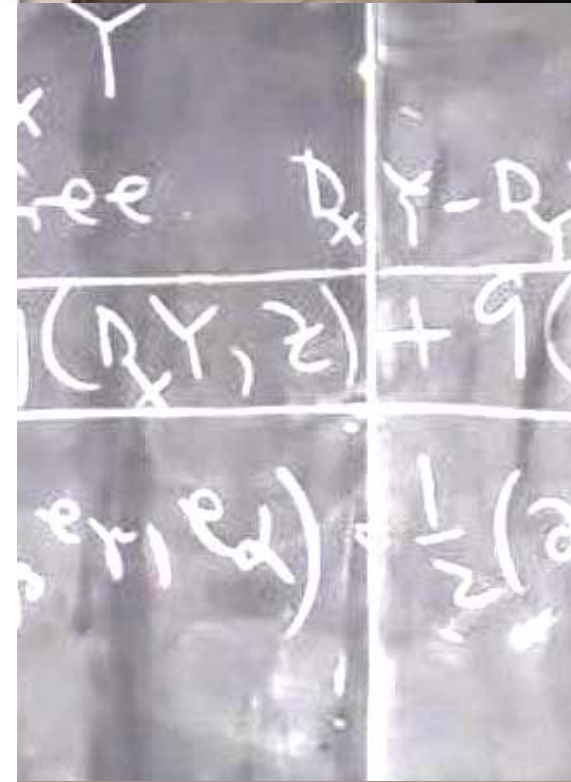
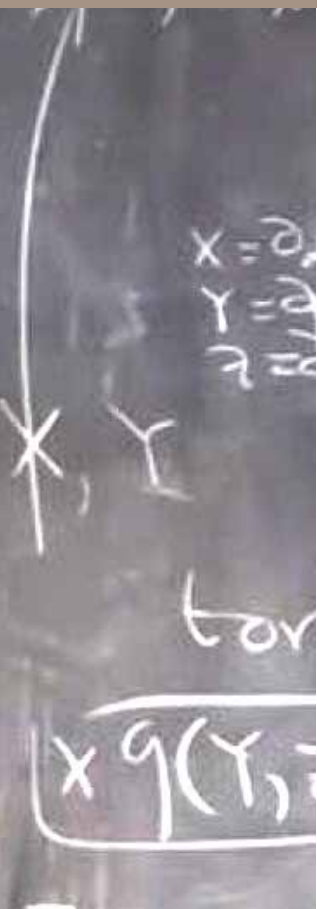


**January 26 - 29 2016**

Modern developments  
in Analysis, and its  
many applications to  
other fields

# ANALYSIS, PDE'S, & GEOMETRY

Conference In Honor of  
**SERGIU KLAINERMAN**



**ORGANIZERS:**

**Peter Constantin, Mihalis Dafermos, Alexandru Ionescu, Igor Rodnianski**

**SPEAKERS:**

**S. Brendle** Stanford U.  
**J.-Y. Chemin** U. Pierre et Marie Curie  
**P. Constantin** Princeton U.  
**M. Dafermos** Princeton U.  
**C. Fefferman** Princeton U.  
**P. Gerard** U. Paris-Sud  
**G. Holzegel** Imperial College London  
**G. Huisken** MRI Oberwolfach  
**A. Ionescu** Princeton U.

**C. Kenig** U. of Chicago  
**J. Krieger** Ecole Poly. Federale Lausanne  
**G. Ponce** UC-Santa Barbara  
**I. Rodnianski** Princeton U.  
**G. Staffilani** MIT  
**J. Szeftel** U. Pierre et Marie Curie  
**T. Tao** UC-Los Angeles  
**D. Tataru** UC-Berkeley